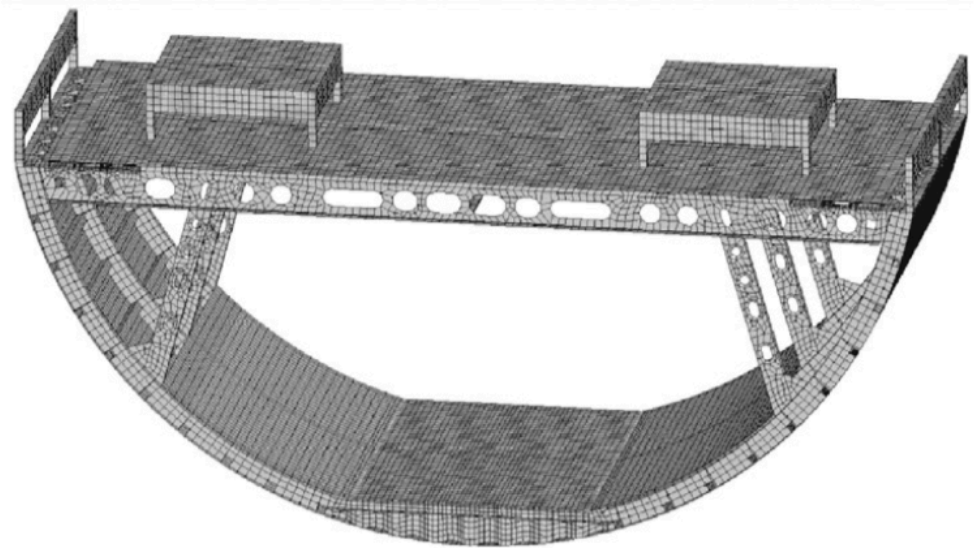


(a) Geometrical model



Professor Yiru Ren

From: Yiru Ren, Jinwu Xiang, Jianqiang Zheng, Zhangping Luo. Crashworthiness Analysis of Aircraft Fuselage with Sine-wave Beam Structure. Chinese Journal of Aeronautics, Vol. 29, No. 2, 2016, pp. 403-410.

See:

<http://grjl.hnu.edu.cn/p/en/7E7E3F6A35F0755CA03834C0E7C6255F>
https://www.researchgate.net/scientific-contributions/2119683695_Yi-Ru_Ren

College of Mechanical and Vehicle Engineering
 Hunan University, Changsha, China

Education:

2012: PhD, Beihang University
 2005: B.Sc., Harbin Engineering University

Research Interests:

Mechanical and vehicle engineering; Aerospace engineering; Applied energy; Ocean engineering

Selected Publications:

Hongyong Jiang and Yiru Ren, "Crashworthiness and failure analysis of steeple-triggered hat-shaped composite structure under the axial and oblique crushing load", *Composite Structures*, Vol. 229, Article 111375, 1

December 2019

Yiru Ren, Hongyong Jiang, Zhihui Liu, "Evaluation of double- and triple-coupled triggering mechanisms to improve crashworthiness of composite tubes", *International Journal of Mechanical Science*, Vol. 157-168, pp 1-12, July 2019

Gui-Lin She, Yi-Ru Ren and Fuh-Gwo Yuan, "Hygro-thermal wave propagation in functionally graded double-layered nanotubes systems", *Steel and Composite Structures*, May 2019

Hongyong Jiang, Yiru Ren*, Songjun Zhang, Zhihui Liu, Guoqin Yu, Jinwu Xiang. Damage and perforation resistance behaviors induced by projectile impact load on bonding-patch repaired and scarf-patch repaired composite laminates. *International Journal of Damage Mechanics*, (Online published)

Zhihui Liu, Hongyong Jiang, Yiru Ren*, Zhansen Qian, Fuh-gwo Yuan. Energy-absorption performance of composite corrugated plates with corrugated-shape ditch plug initiator. *Polymer Composites*. 2018. (Online published)

Binhua Gao, Yiru Ren*, Hongyong Jiang, Jinwu Xiang. Sensitivity analysis based variable screening and reliability optimization for composite fuselage frame crashworthiness design. *International Journal of Crashworthiness*. Vol. 24, No. 4, pp 380-388, 2019

Hongyong Jiang, Yiru Ren*, Zhihui Liu, Songjun Zhang. Microscale finite element analysis for predicting effects of air voids on mechanical properties of single fiber bundle in composite, *Journal of Materials Science*, Vol. 54, No. 2, 2019, pp. 1363-1381.

Guilin She, Fuh-gwo Yuan, Yiru Ren*, Hai-bo Liu, Wan-shen Xiao. Nonlinear bending and vibration analysis of functionally graded porous tubes via a nonlocal strain gradient theory, *Composite Structures*, Vol. 203, No. 61, pp. 614-623, 2018.

Songjun Zhang, Hongyong Jiang, Yiru Ren*, Zhansen Qian, Zheqi Lin. Multi-Scale Progressive Damage Model for Analyzing the Failure Mechanisms of 2D Triaxially Braided Composite under Uniaxial Compression Loads. *Applied Composite Materials*, Vol. 25, No. 4, pp. 921-938, 2018.

Guilin She, Kun-ming Yan, Yan-long Zhang, Hai-bo Liu, Yiru Ren*. Wave propagation of functionally graded porous nanobeams based on nonlocal strain gradient theory. *The European Physical Journal Plus*, Vol. 133, No. 9, pp. 368-376.

Guilin She, Fuh-gwo Yuan, Yiru Ren*. On wave propagation of porous nanotubes. *International Journal of Engineering Science*. Vol. 130, 2018, pp. 62-74.

Hongyong Jiang, Yiru Ren*, Zhihui Liu, Songjun Zhang, Xiaoqin Wang. Evaluations of failure initiation criteria for predicting damages of composite structures under crushing loading. *Journal of Reinforced Plastics and Composites*, Vol. 37, No. 21, 2018, pp. 1279-1303.

Hongyong Jiang, Yiru Ren*, Zhihui Liu, Songjun Zhang, Guoqin Yu. Multi-Scale analysis for mechanical properties of fiber bundle and damage characteristics of 2D triaxially braided composite panel under shear loading. *Thin-Walled Structures*, Vol. 132, No. 27, 2018, pp. 176-186.

Hongyong Jiang, Yiru Ren*, Songjun Zhang, Zhihui Liu, Lu Nie. Multi-scale finite element analysis for tension and ballistic penetration damage characterizations of 2D tri-axially braided composite, *Journal of Materials Science*. Vol. 53, No. 14, 2018, pp. 10071-10094.

Guilin She, Yiru Ren*, Wanshen Xiao, Haibo Liu. Study on thermal buckling and post-buckling behaviors of FGM tubes resting on elastic foundation, *Structural Engineering and Mechanics*, Vol. 66, No. 6, 2018, pp. 729-736.

Guoqing Yu, Yiru Ren*, Tiantian Zhang, Wanshen Xiao, Hongyong Jiang. Hashin failure theory based damage assessment methodology of composite tidal turbine blades and implications for blade design. *China Ocean Engineering*. Vol. 32, No. 2, 2018, pp. 216-225.

Guilin She, Yiru Ren*, Fuh-gwo Yuan, Wanshen Xiao. On vibrations of porous nanotubes. *International Journal of Engineering Science*. Vol 125, 2018, pp. 23-35.

Hongyong Jiang, Yiru Ren*, Jinwu Xiang. A numerical study on the energy-absorption of fibre metal laminate

conical frusta under quasi-static compression loading. *Thin-Walled Structures*, Vol. 124, 2018, pp. 278-290.

Yiru Ren*, Hongyong Jiang, Binhua Gao, Jinwu Xiang. A progressive intraply material deterioration and delamination based failure model for the crashworthiness of fabric composite corrugated beam: Parameter sensitivity analysis. *Composite Part B: Engineering*, Vol 135, 2018, pp. 49-71.

Yiru Ren*, Songjun Zhang, Hongyong Jiang, Jinwu Xiang. Meso-scale Progressive Damage Behavior Characterization of Triaxial Braided Composites under Quasi-Static Tensile Load. *Applied Composite Materials*. Vol. 25, No. 1, 2018, pp. 45-66.

Yiru Ren*, Hongyong Jiang, Wenyuan Ji, Hanyu Zhang, Jinwu Xiang, Fuh-gwo Yuan. Improvement of Progressive Damage Model to Predicting and Designing Crashworthy Composite Corrugated Plate. *Applied Composite Materials*. Vol 25, No 1, 2018, pp. 45-66.

Yiru Ren*, Hanyu Zhang, Jinwu Xiang. A Novel Aircraft Energy Absorption Strut System with Corrugated Composite Plate to Improve Crashworthiness, *International Journal of Crashworthiness*, Vol. 23, No. 1, 2018, pp. 1-10.

Yiru Ren*, Bingwen Liu, Tiantian Zhang, Qihong Fang. Design and hydrodynamic analysis of horizontal axis tidal stream turbines with winglets. *Ocean Engineering*. Vol. 144, 2017, pp. 374-383.

Guilin She, Yiru Ren*, Fuh-gwo Yuan. On buckling and postbuckling behavior of nanotubes. *International Journal of Engineering Science*. Vol 121, 2017, pp. 130-142.

Xuansheng Wang, Zheqi Lin*, Yiru Ren, Topology optimization of piezocomposite resonator for maximizing excitation strength and synthesizing desired eigenmodes, *Acta Mechanica Solida Sinica*, Vol. 30, No. 5, 2017, pp. 531-539.

Hongyong Jiang, Yiru Ren*, Binhua Gao. Research on the progressive damage model and trigger geometry of composite waved beam to improve crashworthiness. *Thin-walled Structures*. Vol. 119, 2017, pp. 531-543.

Hongyong Jiang, Yiru Ren*, Binhua Gao, Jinwu Xiang, Fuh-gwo Yuan. Design of Novel Plug-type Triggers for Composite Square Tubes: Enhancement of Energy-Absorption Capacity and Inducing Failure Mechanisms. *International Journal of Mechanical Sciences*. Vol. 131-132, 2017, pp. 113-136.

Hongyong Jiang, Yiru Ren*, Binhua Gao, Jinwu Xiang. Numerical investigation on links between the stacking sequence and energy absorption characteristics of fabric and unidirectional composite sinusoidal plate. *Composite Structures*. Vol. 171, 2017, pp. 382-402.

Guilin She, Fuh-gwo Yuan, Yiru Ren*. Thermal buckling and post-buckling analysis of functionally graded beams based on a general higher-order shear deformation theory, *Applied Mathematical Modelling*. Vol. 47, 2017, pp. 340-357.

Guilin She, Fuh-gwo Yuan, Yiru Ren*. Research on nonlinear bending behaviors of FGM infinite cylindrical shallow shells resting on elastic foundations in thermal environments, *Composite Structures*. Vol. 170, 2017, pp. 111-121.

Guilin She, Fuh-gwo Yuan, Yiru Ren*. Nonlinear analysis of bending, thermal buckling and post-buckling for functionally graded tubes by using a refined beam theory. *Composite Structures*. Vol. 165, 2017, pp. 74-82.

Yiru Ren*, Jinwu Xiang. Improvement of Crashworthy Performance of Aircraft Strut System by Use of Metal Tube Inversion Mechanism. *Aircraft Engineering and Aerospace Technology*, Vol. 89, No. 2, 2017, pp. 305 - 311.

Guilin She, Yiru Ren*. Thermal buckling and postbuckling analysis of piezoelectric FGM beams based on high-order shear deformation theory. *Journal of Thermal Stresses*. Vol. 40, No. 6, 2017, pp. 783-797.

Yiru Ren*, Jinwu Xiang, Zheqi Lin, Tiantian Zhang. A Novel Topology Optimization Method for Composite Beam. *Proceedings of the Institution of Mechanical Engineers, Part G: Journal of Aerospace Engineering*, Vol. 230, No. 7, 2016, pp. 1153-1163.

Yiru Ren, Jinwu Xiang, Jianqiang Zheng, Zhangping Luo. Crashworthiness Analysis of Aircraft Fuselage with Sine-wave Beam Structure. *Chinese Journal of Aeronautics*, Vol. 29, No. 2, 2016, pp. 403-410.

Yiru Ren, Jinwu Xiang*, Zheqi Lin. Topology Design of Composite Rotor Beam with Gradient-based Algorithms. *Aircraft Engineering and Aerospace Technology*, Vol. 87, No. 4, 2015, pp. 305 - 311.

Zheqi Lin*, Xuansheng Wang, Yiru Ren. Topology optimization design of micro-mass sensors for maximizing detection sensitivity. *Acta Mechanica Sinica*, Vol. 31, No. 4, 2015, pp.536-544.

Yiru Ren, Jinwu Xiang*. Crashworthiness uncertainty analysis of typical civil aircraft based on Box-Bohnken Method. *Chinese Journal of Aeronautics*, Vol. 27, No. 3, 2014, pp. 550-557.

Yiru Ren, Jinwu Xiang*. Energy absorption structures design of civil aircraft to improve crashworthiness. *The Aeronautical Journal*, Vol. 118, No. 1202, 2014, pp. 383-398.

Tiantian Zhang*, Yiru Ren. Prediction of Inverted Velocity Profile for Gas Flow in Nanochannel. *Modern Physics Letters B*, Vol. 28, No. 29, 2014, pp. 1450227.

Yiru Ren, Jinwu Xiang*. The crashworthiness of civil aircraft using different quadrangular tubes as cabin-floor struts. *International Journal of Crashworthiness*, Vol. 16, No. 3, 2011, pp. 253-262.

Jianqiang Zheng, Jinwu Xiang*, Zhangping Luo, Yiru Ren. Crashworthiness design of transport aircraft subfloor using polymer foams. *International Journal of Crashworthiness*, Vol. 16, No. 4, 2011, pp. 375-383.

Yiru Ren, Jinwu Xiang*. A comparative study of the crashworthiness of civil aircraft with different strut configurations. *International Journal of Crashworthiness*, Vol. 15, No. 3, 2010, pp. 321-330.

Yiru Ren*, Jinwu Xiang, Yongju Yan, Shaohua Meng. Crashworthiness of civil aircraft subject to soft soil and concrete impact surface. *Procedia Engineering*, Vol. 80, pp. 193-201, 2014.

Shaohua Meng, Jinwu Xiang*, Zhangping Luo, Yiru Ren, Nanjian Zhuang. A novel trajectory planning strategy for aircraft emergency landing using Gauss pseudospectral method. *Journal of Control Theory and Application*. Vol. 12, No. 4, pp. 393-401, 2014.