



Professor Raheb Gholami

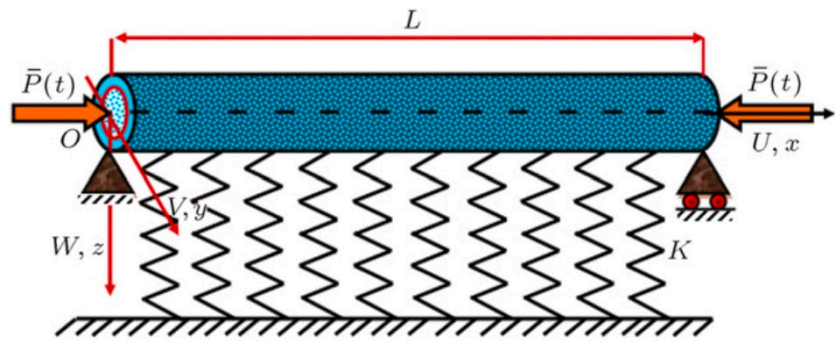


Figure 1: Schematic of a SWCNT: kinematic parameters, coordinate system, geometry and loading.

From: Ansari R, Gholami R, Sahmani S: **On the dynamic stability of embedded single-walled carbon nanotubes including thermal environment effects**. Scientia Iranica 2012,19(3):919–925

See:

<https://scholar.google.com/citations?user=dE-vHToAAAAJ&hl=en>

https://www.researchgate.net/profile/Raheb_Gholami

Dept. of Mechanical Engineering, Lahijan Branch

Islamic Azad University, Lahijan, Iran

Formerly: University of Guilan, Rasht, Iran

Selected Publications:

Ansari R., Gholami R., Sahmani S.: Free vibration analysis of size-dependent functionally graded microbeams based on the strain gradient Timoshenko beam theory. *Compos. Struct.* 94, 221–228 (2011)

Ansari, R., Gholami, R., Darabi, M.: Thermal buckling analysis of embedded single-walled carbon nanotubes with arbitrary boundary conditions using the nonlocal Timoshenko beam theory. *J. Therm. Stress.* 34, 1271–1281 (2011)

Ansari, R., Gholami, R., Darabi, M.A.: A nonlinear Timoshenko beam formulation based on strain gradient theory. *J. Mech. Mater. Struct.* 7, 195–211 (2012)

Ansari, R., Gholami, R., Shojaei, M.F., et al.: Surface stress effect on the pull-in instability of hydrostatically and electrostatically actuated rectangular nanoplates with various edge supports. *J. Eng. Mater. Technol.* 134, 041013 (2012)

Ansari, R., Gholami, R., Darabi, M.: Nonlinear free vibration of embedded double-walled carbon nanotubes with layerwise boundary conditions. *Acta Mechanica* 223, 2523–2536 (2012)

Ansari R, Gholami R, Sahmani S (2012) Study of small scale effects on the nonlinear vibration response of functionally graded Timoshenko microbeams based on the strain gradient theory. *J Comput Nonlinear Dyn ASME J* 7:031010

Ansari R, Gholami R, Sahmani S: On the dynamic stability of embedded single-walled carbon nanotubes including thermal environment effects. *Scientia Iranica* 2012,19(3):919–925.

R. Ansari (1), R. Gholami (2) and S. Sahmani, “Prediction of compressive post-buckling behavior of single-walled carbon nanotubes in thermal environments”, *Appl Phys A, Materials Science & Processing*, Springer, December 2012

R. Ansari, R. Gholami and M.A. Darabi, “Nonlinear free vibration of embedded double-walled carbon

nanotubes with layerwise boundary conditions”, *Acta Mechanica*, Vol. 223, No. 12, pp 2523-2536, December 2012

R. Ansari, R. Gholami and H. Rouhi, “Vibration analysis of single-walled carbon nanotubes using different gradient elasticity theories”, *Composites Part B: Engineering*, Vol. 43, No. 8, pp 2985-2989, December 2012

S. Sahmani, R. Ansari, R. Gholami and A. Darvizeh, “Dynamic stability analysis of functionally graded higher-order shear deformable microshells based on the modified couple stress elasticity theory”, *Composites Part B: Engineering*, Vol. 51, pp 44-53, August 2013

Ansari, R., Faghih Shojaei, M., Gholami, R., et al.: Thermal postbuckling behavior of size-dependent functionally graded Timoshenko microbeams. *Int. J. Non-Linear Mech.* 50, 127–135 (2013)

Ansari, R., Gholami, R., Shojaei, M.F., et al.: Size-dependent bending, buckling and free vibration of functionally graded Timoshenko microbeams based on the most general strain gradient theory. *Compos. Struct.* 100, 385–397 (2013)

Mohammadi, V., Ansari, R., Faghih, S.M., Gholami, R., Sahmani, S.: Size-dependent dynamic pull-in instability of hydrostatically and electrostatically actuated circular microplates. *Nonlinear Dyn.* 73, 1515–1526 (2013)

Ansari R., Mohammadi V., Faghih Shojaei M., Gholami R., Rouhi H.: Nonlinear vibration analysis of Timoshenko nanobeams based on surface stress elasticity theory. *Eur. J. Mech. A Solids* 45, 143–152 (2014)

Ansari R., Faghih Shojaei M., Mohammadi V., Gholami R., Sadeghi F.: Nonlinear forced vibration analysis of functionally graded carbon nanotube-reinforced composite Timoshenko beams. *Compos. Struct.* 113, 316–327 (2014)

R. Ansari, R. Gholami and S. Sahmani, “Free vibration of size-dependent functionally graded microbeams based on the strain gradient Reddy beam theory”, *International Journal for Computational Methods in Engineering Science and Mechanics*, Vol. 15, No. 5, pp 401-412, 2014

R. Gholami, A. Darvizeh, R. Ansari and M. Hosseinzadeh, “Size-dependent axial buckling analysis of functionally graded circular cylindrical microshells based on the modified strain gradient elasticity theory”, *Meccanica*, Vol. 49, No. 7, pp 1679-1695, July 2014

R. Ansari, R. Gholami, M. Faghih Shojaei, V. Mohammadi and S. Sahmani, “Bending, buckling and free vibration analysis of size-dependent functionally graded circular/annular microplates based on the modified strain gradient elasticity theory”, *European Journal of Mechanics – A/Solids*, Vol. 49, pp 251-267, January-February 2015

R. Ansari, E. Hasrati, M. Faghih Shojaei, R. Gholami, A. Shahabodini, Forced vibration analysis of functionally graded carbon nanotube-reinforced composite plates using a numerical strategy, *Physica E*, 69 (2015), pp. 294–305

Raheb Gholami, Reza Ansari, Abolfazl Darvizeh and Saeed Sahmani, “Axial buckling and dynamic stability of functionally graded microshells based on the modified couple stress theory”, *International Journal of Structural Stability and Dynamics*, Vol. 15, No. 4, 1450070, May 2015

Reza Ansari, Mostafa Faghih Shojaei, Vahid Mohammadi, Raheb Gholami and Mohammad Ali Darabi, “A nonlinear shear deformable nanoplate model including surface effects for large amplitude vibrations of rectangular nanoplates with various boundary conditions”, *International Journal of Applied Mechanics*, Vol. 7, No. 5, 1550076, October 2015

R. Ansari, R. Gholami, A. Norouzzadeh and M.A. Darabi, “Surface stress effect on the vibration and instability of nanoscale pipes conveying fluid based on a size-dependent Timoshenko beam model”, *Acta Mechanica Sinica*, Vol. 31, No. 5, pp 708-719, October 2015

R. Ansari, R. Gholami, S. Sahmani, A. Norouzzadeh and M. Bezdidi-Vahdati, “Dynamic stability analysis of embedded multi-walled carbon nanotubes in thermal environment”, *Acta Mechanica Solida Sinica*, Vol. 28, No. 6, pp 659-667, December 2015

- R. Ansari, T. Pourashraf, R. Gholami and A. Shahabodini, "Analytical solution for nonlinear postbuckling of functionally graded carbon nanotube-reinforced composite shells with piezoelectric layers", *Composites Part B: Engineering*, Vol. 90, pp 267-277, April 2016
- R. Ansari and R. Gholami, "Size-dependent modeling of the free vibration characteristics of postbuckled third-order shear deformable rectangular nanoplates based on the surface stress elasticity theory", *Composites Part B: Engineering*, Vol. 95, pp 301-316, June 2016
- Reza Ansari and Raheb Gholami, "Size-dependent nonlinear vibrations of first-order shear deformable magneto-electro-thermo elastic nanoplates based on the nonlocal elasticity theory", *International Journal of Applied Mechanics*, Vol. 8, No. 4, 1650053, June 2016
- R. Ansari, M.F. Shojaei, R. Gholami, Size-dependent nonlinear mechanical behavior of third-order shear deformable functionally graded microbeams using the variational differential quadrature method, *Composite Structure*, 136 (2016), pp. 669–683
- R. Gholami, A. Darvizeh, R. Ansari and F. Sadeghi, "Vibration and buckling of first-order shear deformable circular cylindrical micro-/nano-shells based on Mindlin's strain gradient elasticity theory", *European Journal of Mechanics –A/Solids*, Vol. 58, pp 76-88, July-August 2016
- R. Ansari, R. Gholami and A. Norouzzadeh, "Size-dependent thermo-mechanical vibration and instability of conveying fluid functionally graded nanoshells based on Mindlin's strain gradient theory", *Thin-Walled Structures*, Vol. 105, pp 172-184, August 2016
- R. Ansari and R. Gholami, "Size-dependent buckling and postbuckling analyses of first-order shear deformable magneto-electro-thermo elastic nanoplates based on the nonlocal elasticity theory", *Int. J. Str. Stab. Dyn.* 17(1), 1750014 (2017) [26 pages], January 2017
- Raheb Gholami and Reza Ansari, "A unified nonlocal nonlinear higher-order shear deformable plate model for postbuckling analysis of piezoelectric-piezomagnetic rectangular nanoplates with various edge supports", *Composite Structures*, Vol. 166, pp 202-218, April 2017